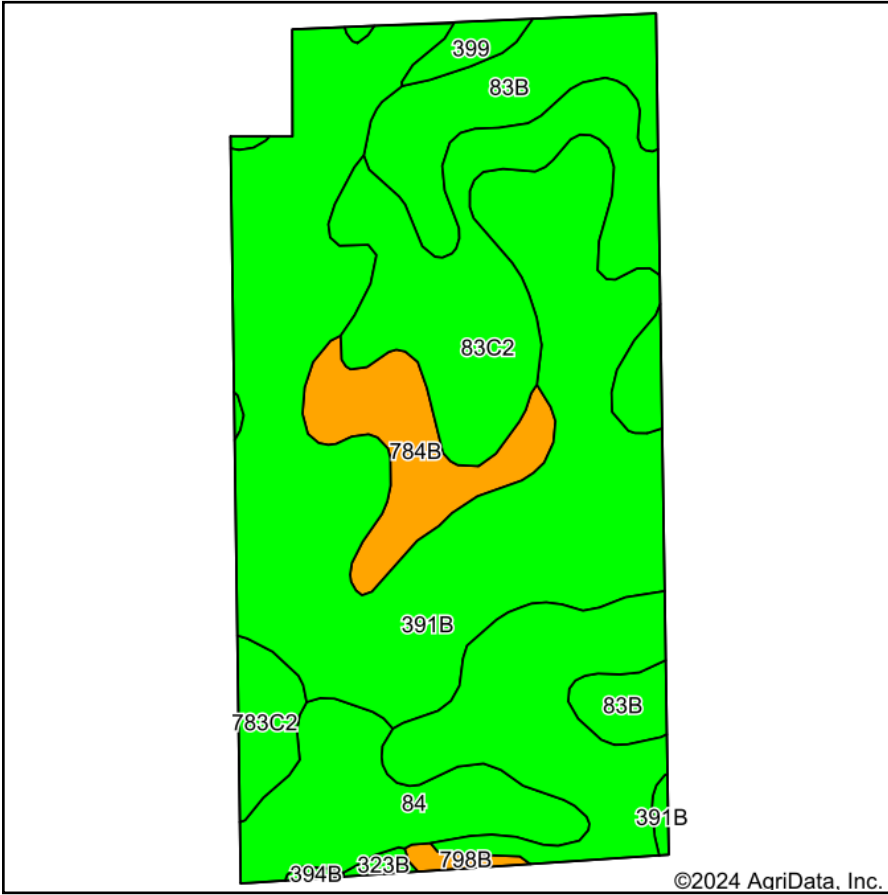
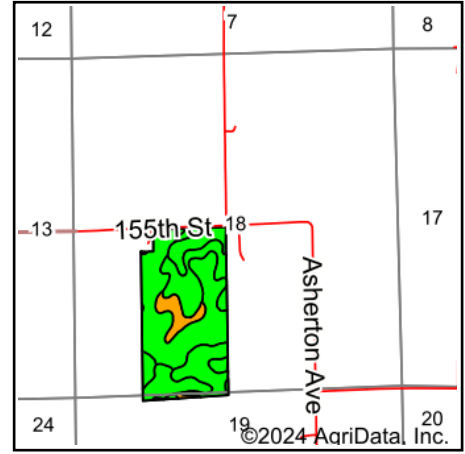


Soils Map



Soils data provided by USDA and NRCS.



State: **Iowa**
 County: **Chickasaw**
 Location: **18-96N-14W**
 Township: **Deerfield**
 Acres: **76.9**
 Date: **10/1/2024**



Maps Provided By:



© AgriData, Inc. 2023

www.AgriDataInc.com



Area Symbol: IA037, Soil Area Version: 29

Code	Soil Description	Acres	Percent of field	CSR2 Legend	Non-Irr Class *c	CSR2**	CSR	Bromegrass alfalfa AUM	Bromegrass alfalfa hay Tons	Corn Bu	Kentucky bluegrass AUM	Oats Bu	Smooth bromegrass AUM	Soybeans Bu
391B	Clyde-Floyd complex, 1 to 4 percent slopes	33.01	43.0%		llw	87	72							
83C2	Kenyon loam, 5 to 9 percent slopes, eroded	21.16	27.5%		llle	84	67	10.6	6.3	212	3.7	88	6.2	61
83B	Kenyon loam, 2 to 5 percent slopes	7.22	9.4%		lle	90	84							
84	Clyde clay loam, 0 to 3 percent slopes	6.67	8.7%		llw	88	74							
784B	Riceville loam, 1 to 4 percent slopes	5.10	6.6%		lle	68	51							
783C2	Cresco loam, 5 to 9 percent slopes, moderately eroded	2.03	2.6%		llle	78	41							

Soils data provided by USDA and NRCS.



Code	Soil Description	Acres	Percent of field	CSR2 Legend	Non-Irr Class *c	CSR2**	CSR	Bromegrass alfalfa AUM	Bromegrass alfalfa hay Tons	Corn Bu	Kentucky bluegrass AUM	Oats Bu	Smooth bromegrass AUM	Soybeans Bu	
399	Readlyn silt loam, 1 to 3 percent slopes	0.93	1.2%		lw	91									
798B	Protivin loam, 1 to 4 percent slopes	0.40	0.5%		lle	61	56								
323B	Fort Dodge loam, 2 to 5 percent slopes	0.26	0.3%		lle	79	71								
394B	Ostrander loam, 2 to 5 percent slopes	0.12	0.2%		lle	88	84								
Weighted Average						2.29	84.9	*-	2.9	1.7	58.3	1	24.2	1.7	16.8

**IA has updated the CSR values for each county to CSR2.

*- CSR weighted average cannot be calculated on the current soils data, use prior data version for csr values.

*c: Using Capabilities Class Dominant Condition Aggregation Method